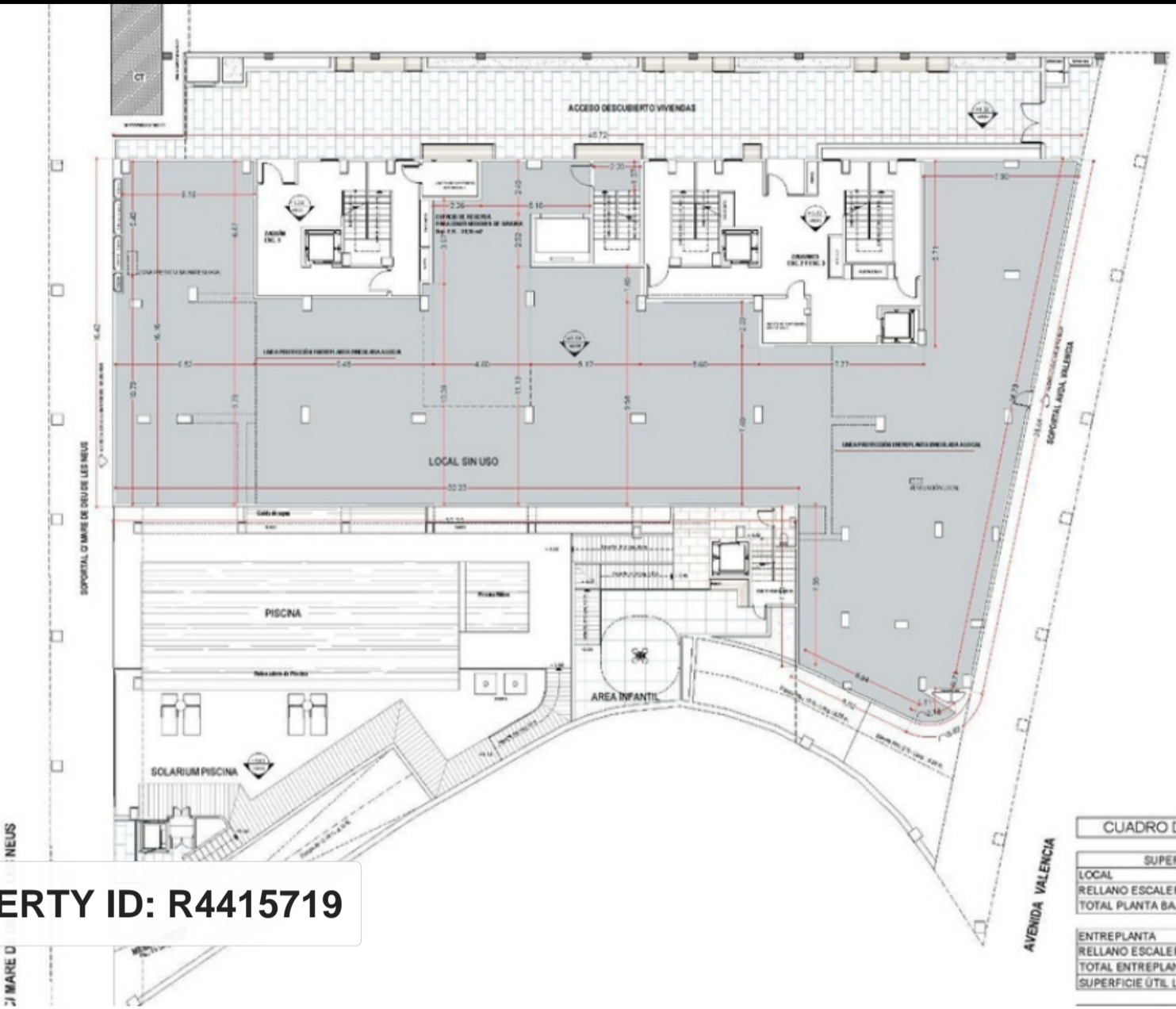


PROPERTY ID: R4415719

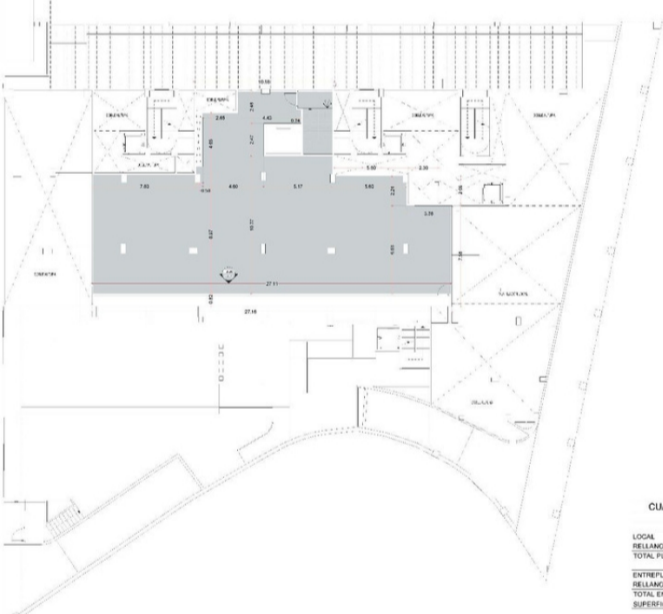


CUADRO DE SUPERFICIES	
SUPERFICIES ÚTILES	
LOCAL	597,22
RELLANO ESCALERA	3,01
TOTAL PLANTA BAJA	600,23
ENTREPLANTA	
RELLANO ESCALERA	11,10
TOTAL ENTREPLANTA	273,98
SUPERFICIE ÚTIL LOCAL	874,21

PLANO:

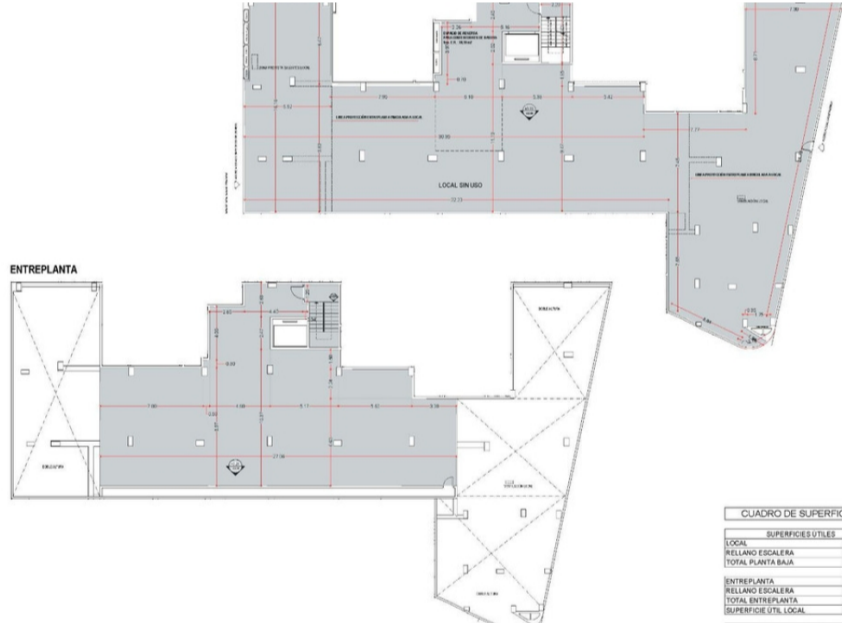
LOCAL
PLANTA BAJA

PLANOS DE OBRA



CUADRO DE SUPERFICIES	
SUPERFICIES ÚTILES	
LOCAL	597,22
RELLANO ESCALERA	3,01
TOTAL PLANTA BAJA	600,23
ENTREPLANTA	
RELLANO ESCALERA	11,10
TOTAL ENTREPLANTA	273,98
SUPERFICIE ÚTIL LOCAL	874,21

PLANO:
LOCAL
ENTREPLANTA



CUADRO DE SUPERFICIES	
SUPERFICIES ÚTILES	
LOCAL	597,22
RELLANO ESCALERA	3,01
TOTAL PLANTA BAJA	600,23
ENTREPLANTA	
RELLANO ESCALERA	11,10
TOTAL ENTREPLANTA	273,98
SUPERFICIE ÚTIL LOCAL	874,21





PLANO:
LOCAL
COMERCIAL

Other for sale in Calpe

€900,000

This magnificent commercial space is strategically located just 300 meters from the beautiful Arenal Bol beach in Calpe, and it's quite central, making it a unique opportunity for those looking to establish a business in one of the busiest and most popular areas of the Mediterranean coast.

Total Area:
The space boasts an impressive total area of...

	
950 m ²	950
	
0	0



+34 609 97 72 62



www.homes-abroad.com



info@homes-abroad.com